

<http://www.godac.jamstec.go.jp/darwin/e>

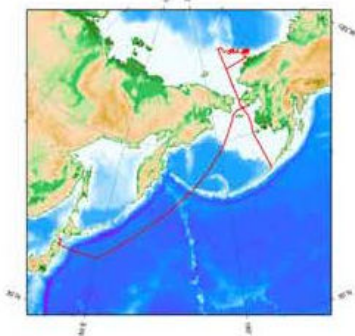
## MIRAI MR15-03 Leg1 Cruise Data

### Cruise Information

Ship Name	MIRAI
Cruise ID	MR15-03 Leg1
Period	2015-08-23 - 2015-10-06
Chief Scientist	Shigeto Nishino (JAMSTEC)
Project Name	[Arctic Ocean Climate System Research]
Cruise Title	Observational studies on the Arctic Ocean climate and ecosystem variability
Proposal Title	Observational studies on the Arctic Ocean climate and ecosystem variability

### Cruise Track

MIRAI MR15-03 Leg1 Cruise Track



### Ports of call

2015-08-23 22:50 Departure from Sekinehama  
 2015-08-24 06:20 Arrival at Hachinohe  
 2015-08-26 08:50 Departure from Hachinohe  
 2015-09-05 15:50 Arrival at Nome  
 2015-09-05 16:10 Departure from Nome  
 2015-10-06 18:50 Arrival at Dutch Harbor

### Research area

Arctic Ocean

[Enlarge Image](#)

### Data List

<input type="checkbox"/>	Observation Data	Quality Level
<input type="checkbox"/>	<a href="#">Cruise Summary</a>	
<input type="checkbox"/>	<a href="#">Cruise Report</a>	
<input type="checkbox"/>	<a href="#">Navigation</a>	Processed (DMO)-QCed
	Bathymetry (MBES)	-
<input type="checkbox"/>	<a href="#">Gravity</a>	Processed (DMO)-Corrected
<input type="checkbox"/>	<a href="#">Shipboard Three Component Magnetometer (STCM)</a>	Processed (DMO)-Corrected
<input type="checkbox"/>	<a href="#">Marine Meteorology</a>	Processed (DMO)-Corrected
<input type="checkbox"/>	<a href="#">Sea-surface Photosynthetically Active Radiation (PAR)</a>	Raw
<input type="checkbox"/>	<a href="#">Cloud Ceiling</a>	Raw
<input type="checkbox"/>	<a href="#">Radiosonde</a>	Processed (DMO)-Corrected
<input type="checkbox"/>	<a href="#">Doppler Radar</a>	Raw
<input type="checkbox"/>	<a href="#">Shipboard Acoustic Doppler Current Profiler (ADCP)</a>	Processed (DMO)-Corrected
<input type="checkbox"/>	<a href="#">Conductivity-Temperature-Depth Profiler (CTD)</a>	Processed (PI)
<input type="checkbox"/>	<a href="#">Expendable Conductivity-Temperature-Depth Profiler (XCTD)</a>	Processed (DMO)-QCed
<input type="checkbox"/>	<a href="#">Underway Thermosalinograph</a>	Processed (DMO)-QCed
<input type="checkbox"/>	<a href="#">Bottle Sampling Water Chemical Analysis</a>	Processed (PI)
<input type="checkbox"/>	<a href="#">Primary Production</a>	Processed (DMO)-QCed

# Data Policy

---

## Things everyone must know

### 5. Data

Please submit the Data obtained by JAMSTEC cruises to IMD according to the instructions below.

	From the end of the cruise
Submit raw Data	within one month
Submit processed Data	within Two years
PMP of Data	two years*

\*Routine Observation Data have no Publication Moratorium Period except as otherwise requested by the Chief Scientist. They are opened as soon as processed.

The word “Data” includes theses kinds of data here.

- Data {
- i . Routine Observation Data (navigation data, shipboard ADCP, gravimeter, magnetometer etc.)
  - ii . Data from instruments fixed onboard (except for Routine Observation Data)
  - iii . Data, photographs and videos from Submersibles or Vehicles
  - iv . Observation Data (ex. CTD data, data obtained by Mochikomi type instruments (see, p.8), etc.)

# Data Site (ADS)

Arctic Data archive System including atmosphere, ocean, and land data in the Arctic regions

https://ads.nipr.ac.jp/

- R/V Mirai data in **DARWIN** are linked to **ADS**.

- Quick view system for ocean data is now developing in ADS. -> Available for DBO/SAS data.

DATA SEARCH

https://ads.nipr.ac.jp/portal/kiwa/Top.action

お気に入りをここに表示するには、☆を選択し、次に☆を選択して、お気に入りバーのフォルダーにドラッグします。または、別のブラウザからインポートします。お気に入りのインポート

ADS Arctic Data archive System

GUEST Login English

Data Search

Data Distribution

1,666 view / 9,267 measurement point

Time Range Select

Begin Date 2015/01/20 End Date 2020/01/19

Dataset Type:

- Point
  - in-situ
  - photo
  - image
  - sample
  - radar
- Line
  - ship
  - moving
  - aircraft
- Grid
  - grid from obs.
  - modal

Availability of Dataset:

- actual
- actual(limited)
- catalog(external links)
- JCAR

To reach data:

- Click icon on the map, then balloon open
- Click data title

Simple Guide:

When takes time to display the Point, Select Max View Number.

ALL

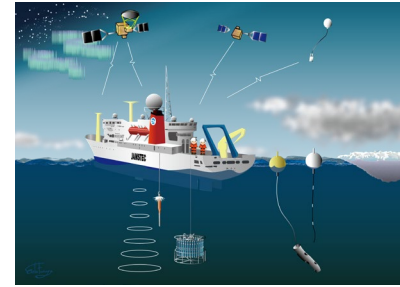
Sync Async

# Quick View System for Ocean Data by ADS

Dialog between scientists and SEs



Observations



Develop quick view system

Collect pre-QCed data

Data QC



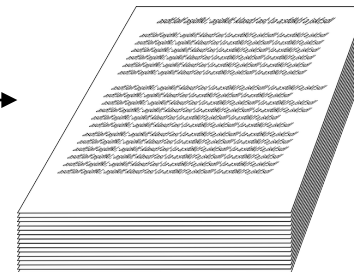
Collect QCed data



Virtual Conferences



Research Products





# Quick View System for Ocean Data by ADS

