

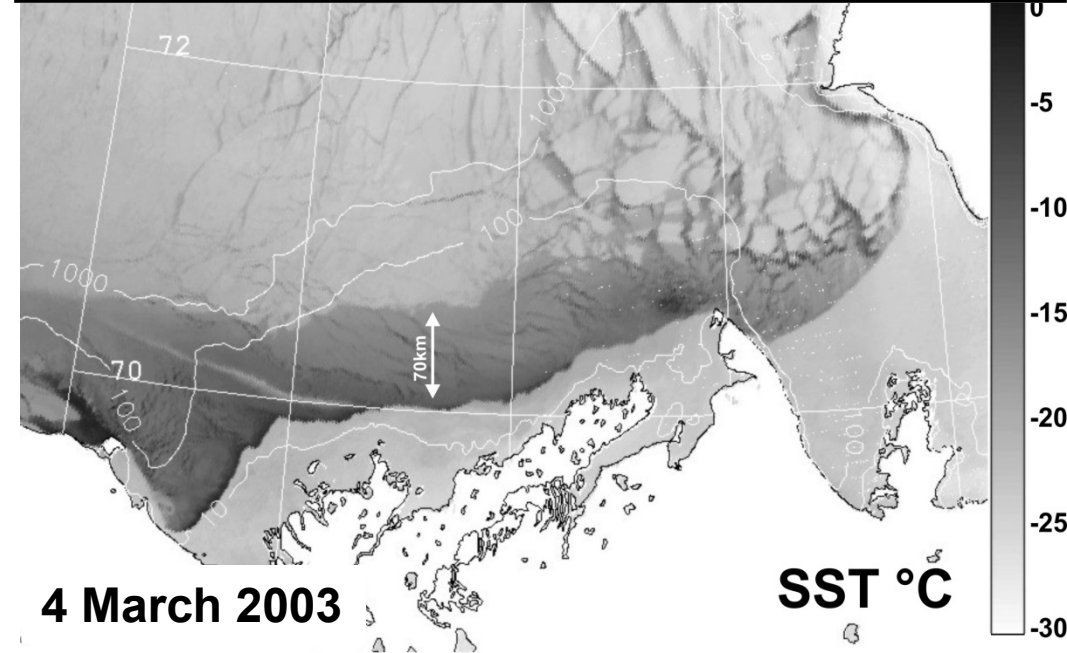
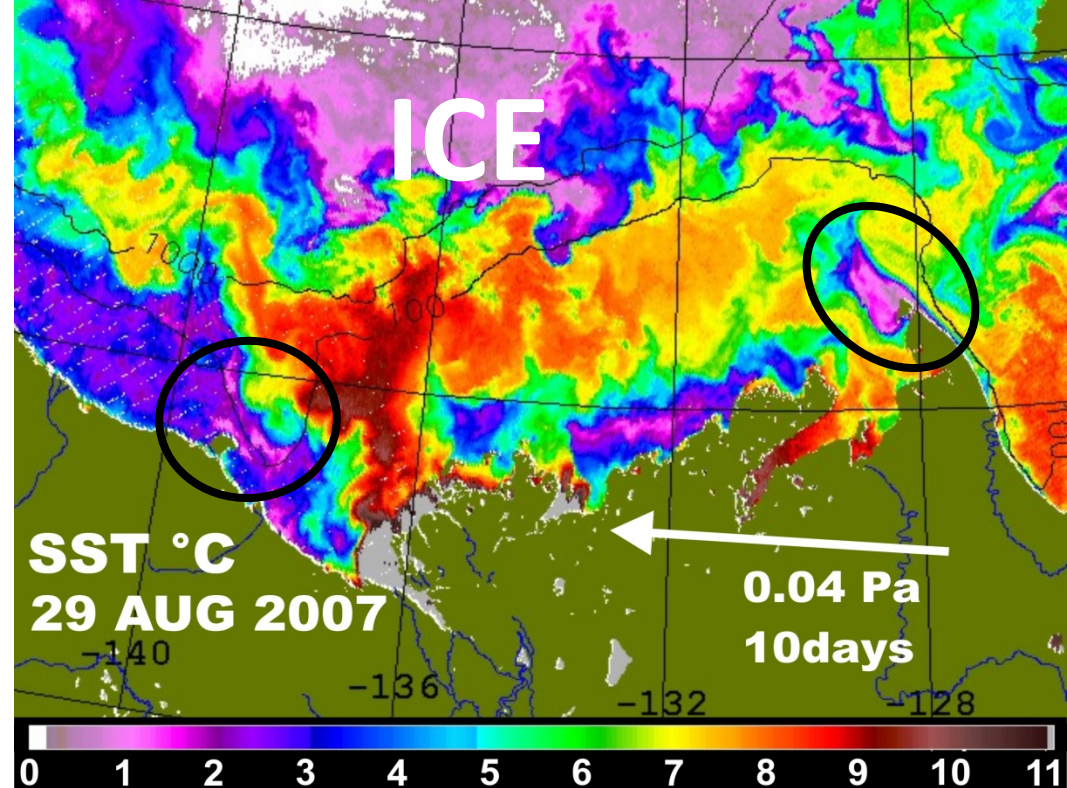
# DBO8: Cape Bathurst, Canada



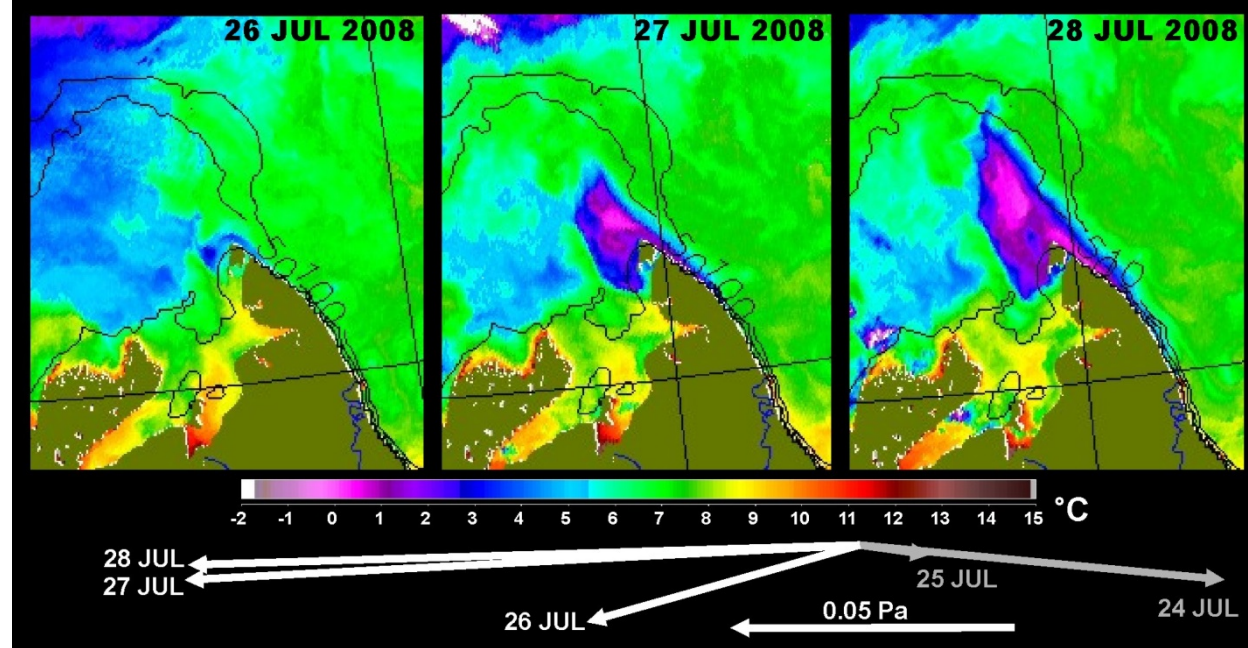
DBO8:

- Benthic hotspot
- Bowhead Whale feeding
- Upwelling/Downwelling

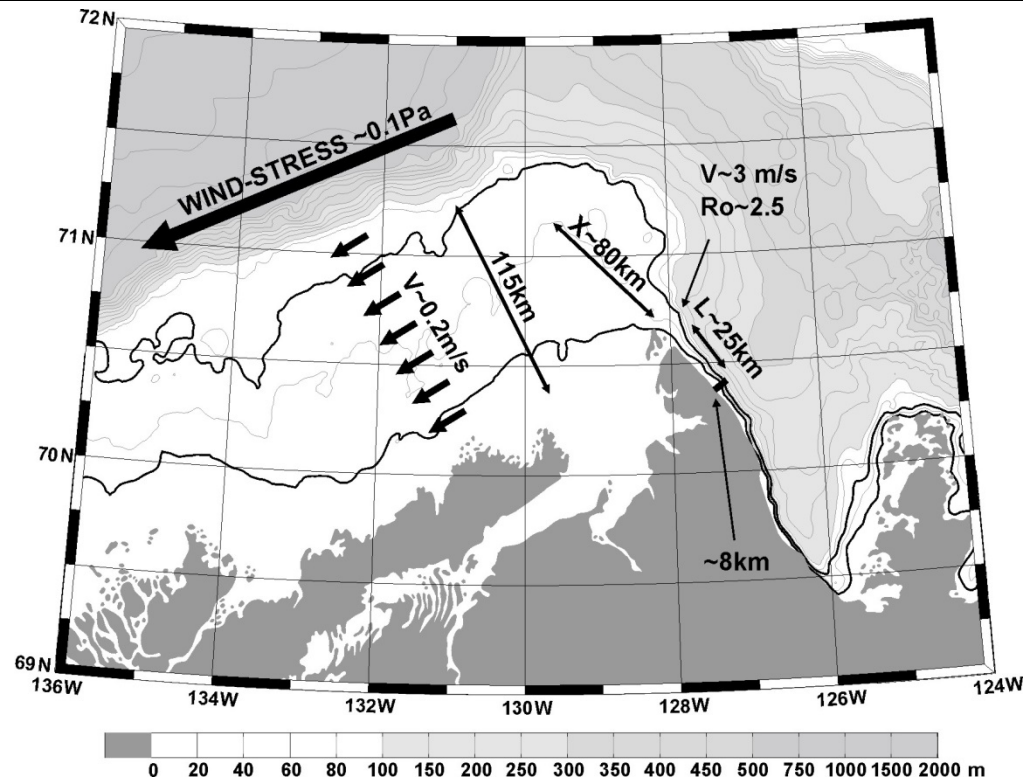
# Summer and Winter upwelling over the Canadian Beaufort Shelf





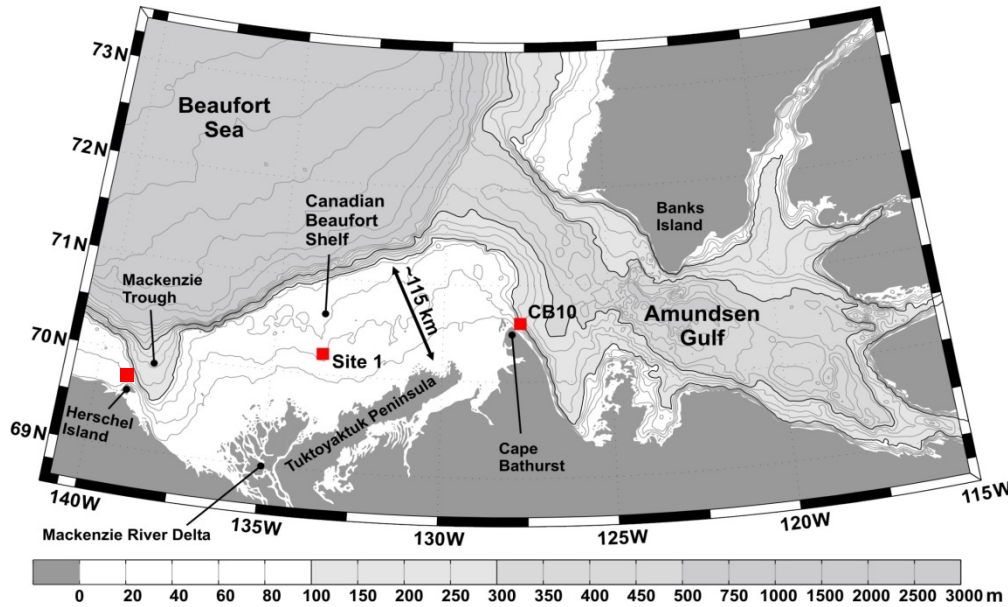


**Cape Bathurst Upwelling is topographically enhanced by isobath convergence from the shelf to the cape.**

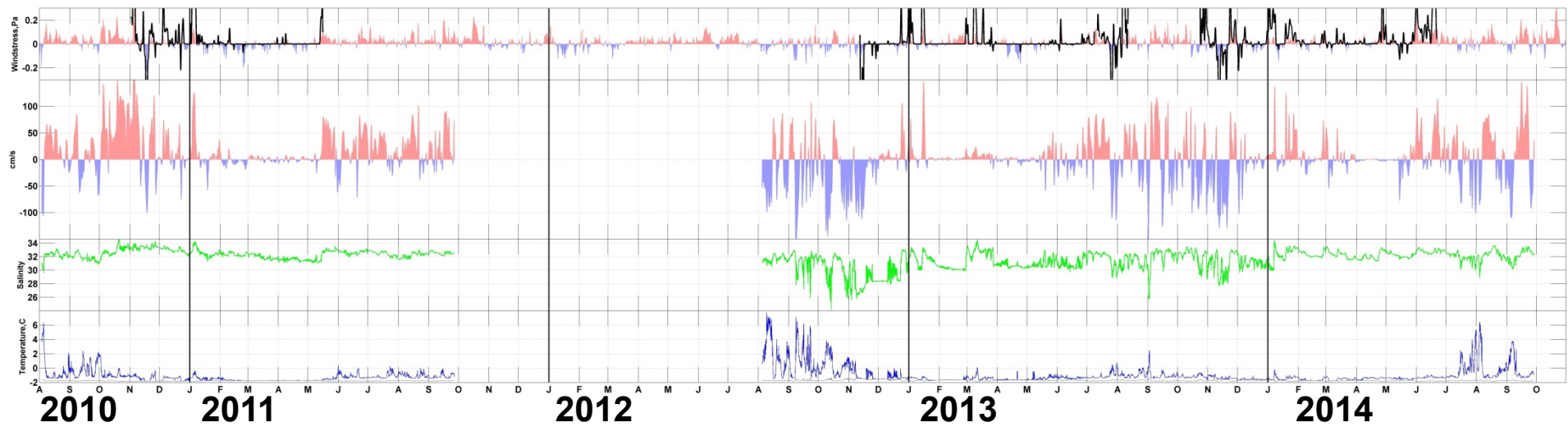


# Upwelling hotspot moorings:

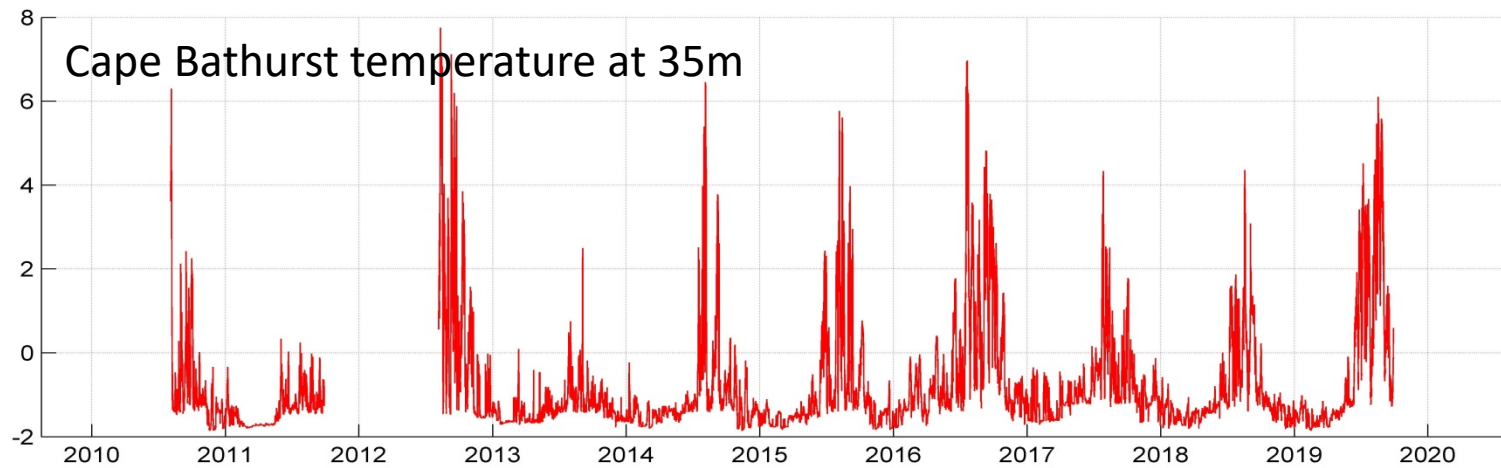
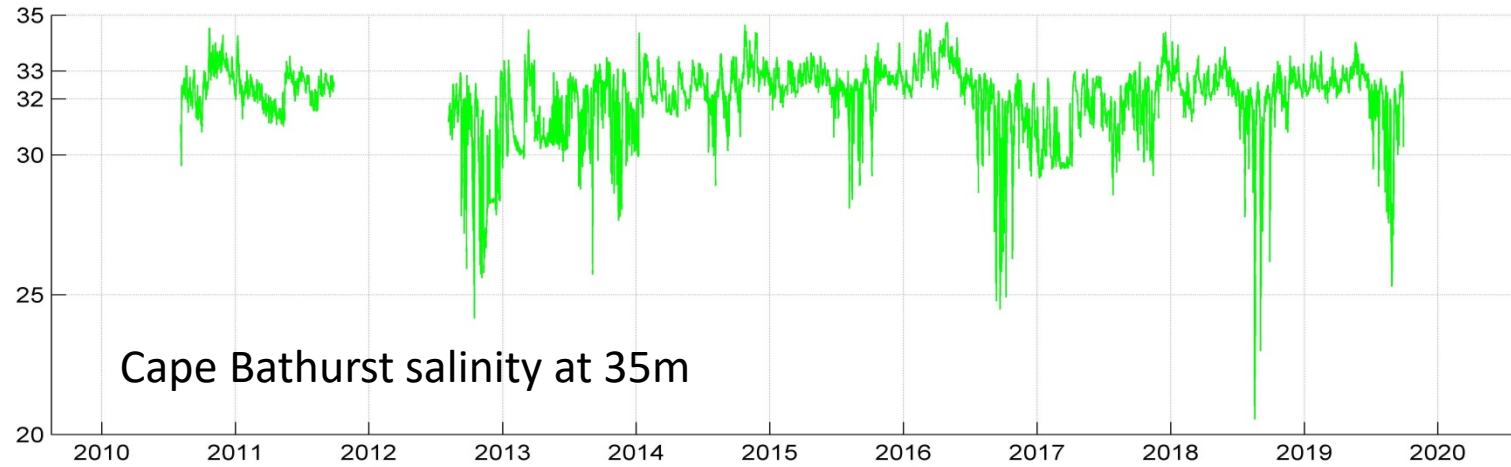
Cape Bathurst, 38m: 2010-2019 time series  
 Hershel Island, 40m: 2014-2019.  
 Both sites redeployed in 2019.



## Cape Bathurst 2010-2014

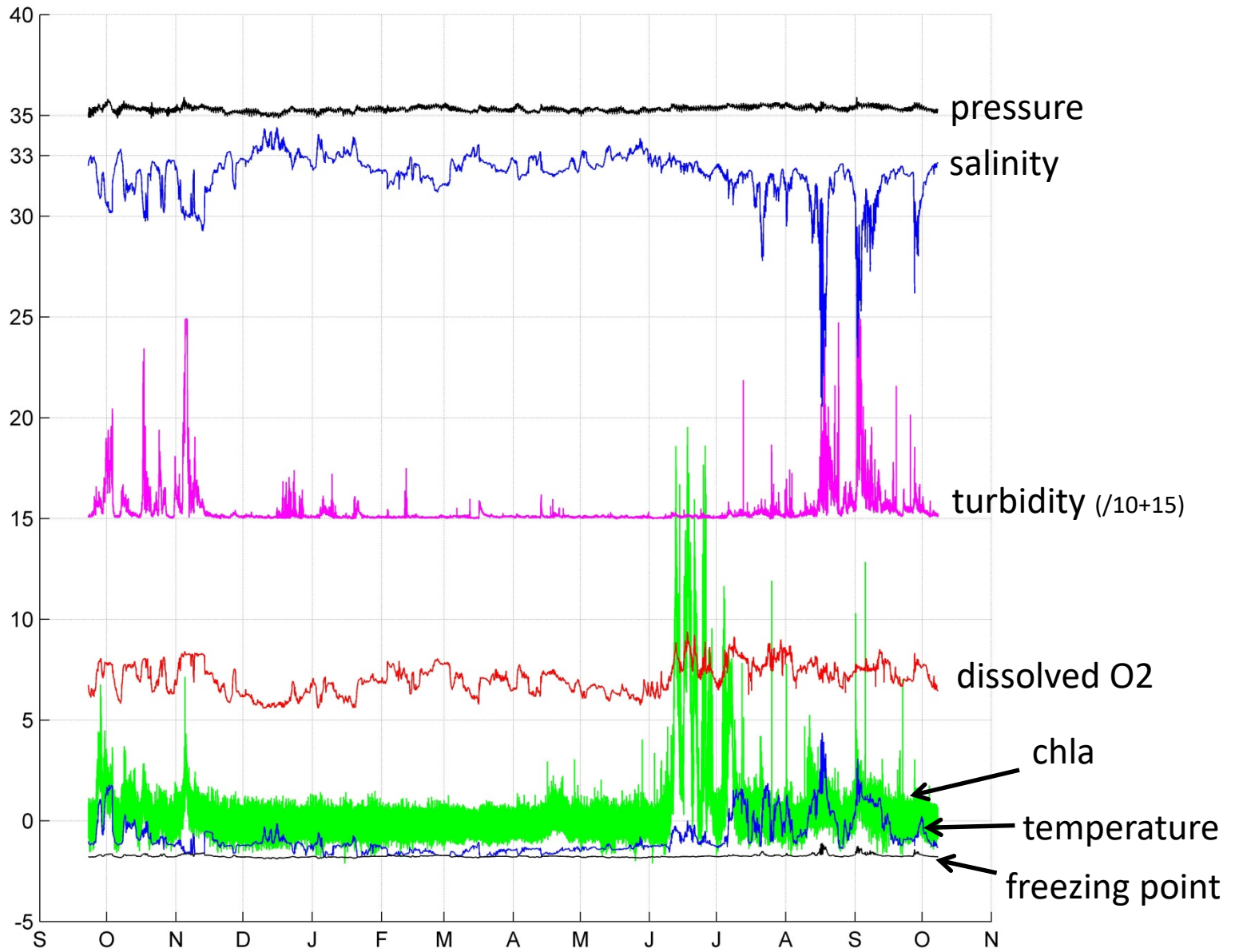


## 2014-2019 time series at Cape Bathurst:





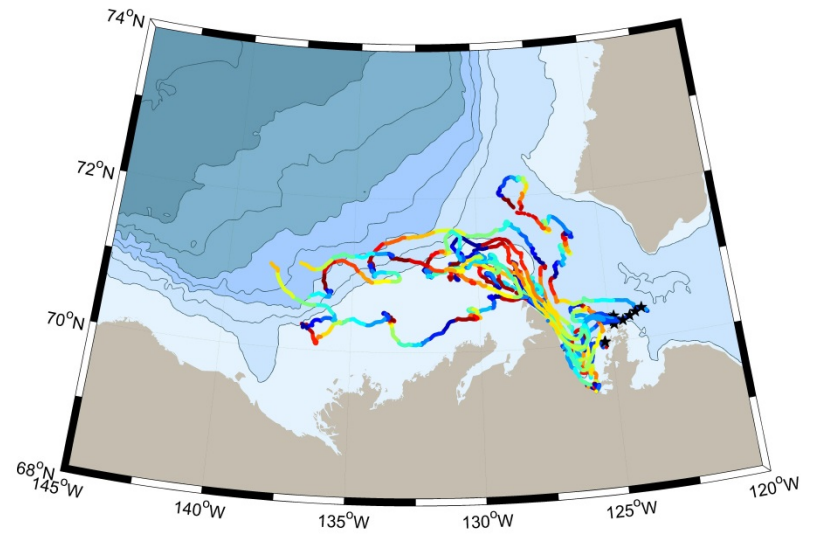
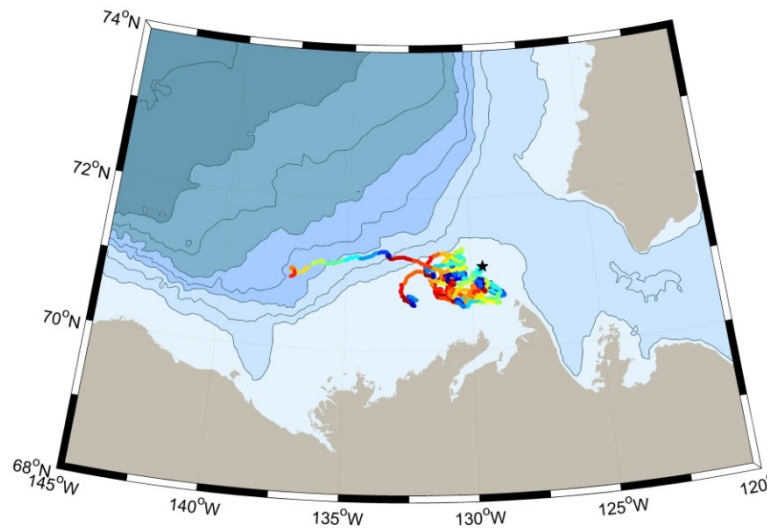
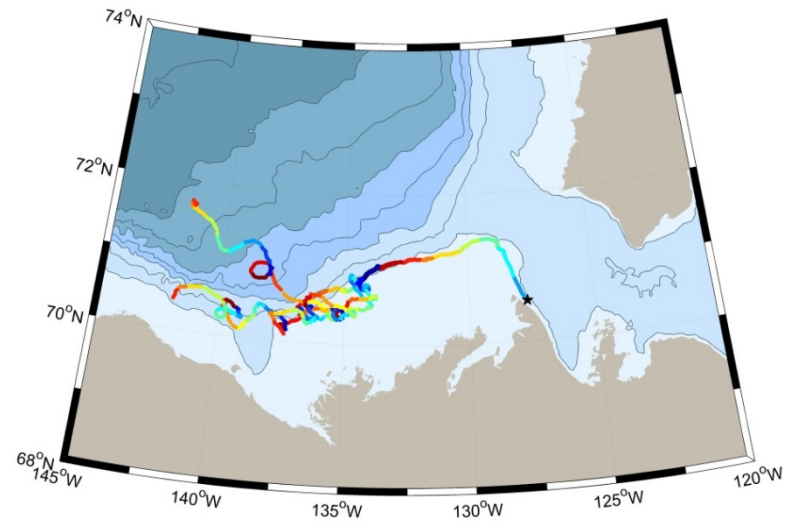
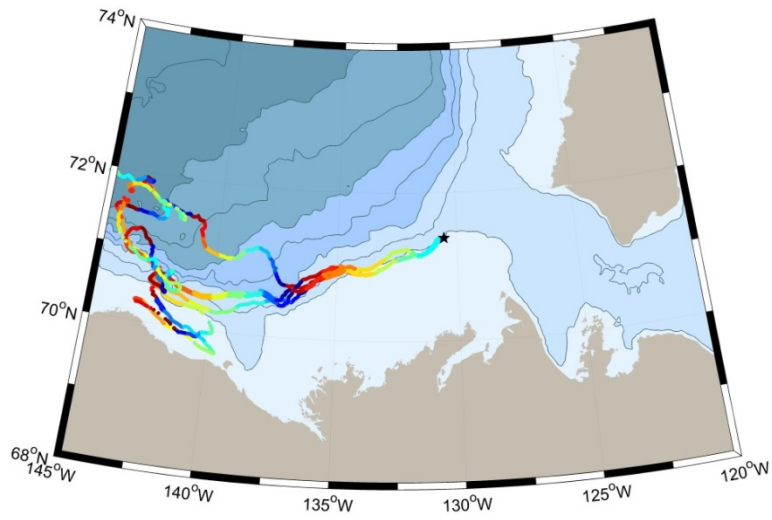
# 2017-2018 Cape Bathurst: Seabird WQMx



# Spot Messenger Surface Current Trackers Deployments in 2017 and 2019

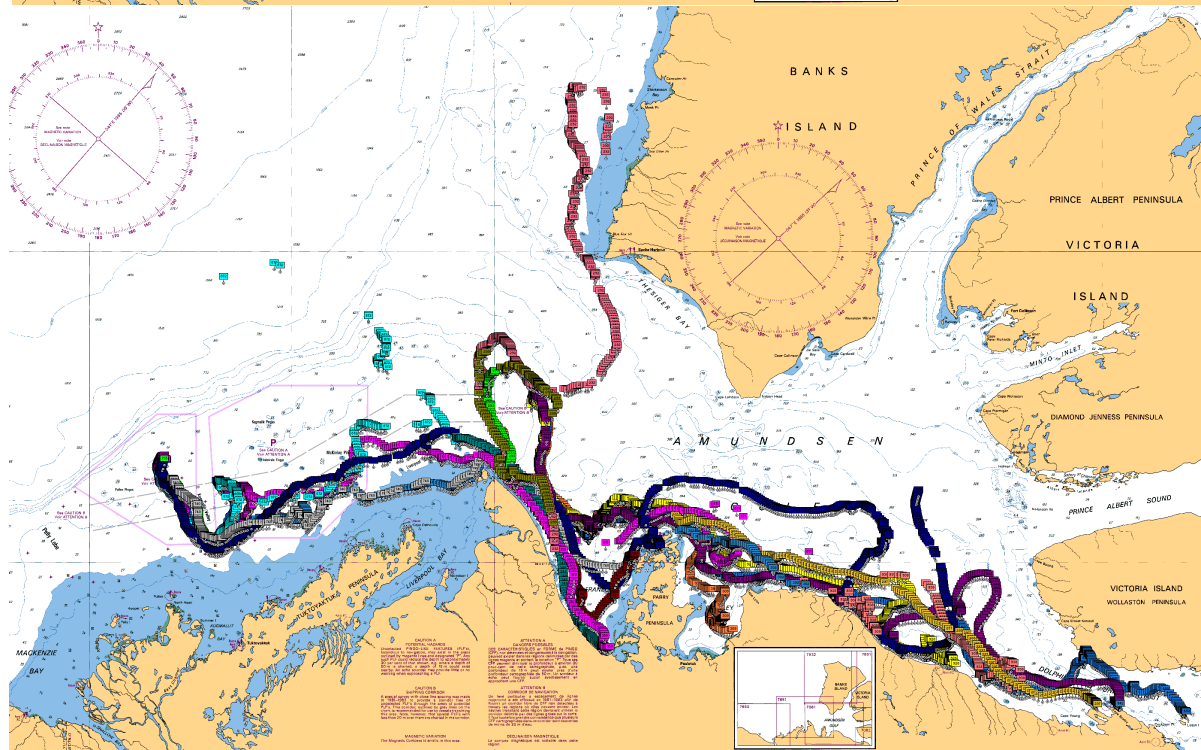
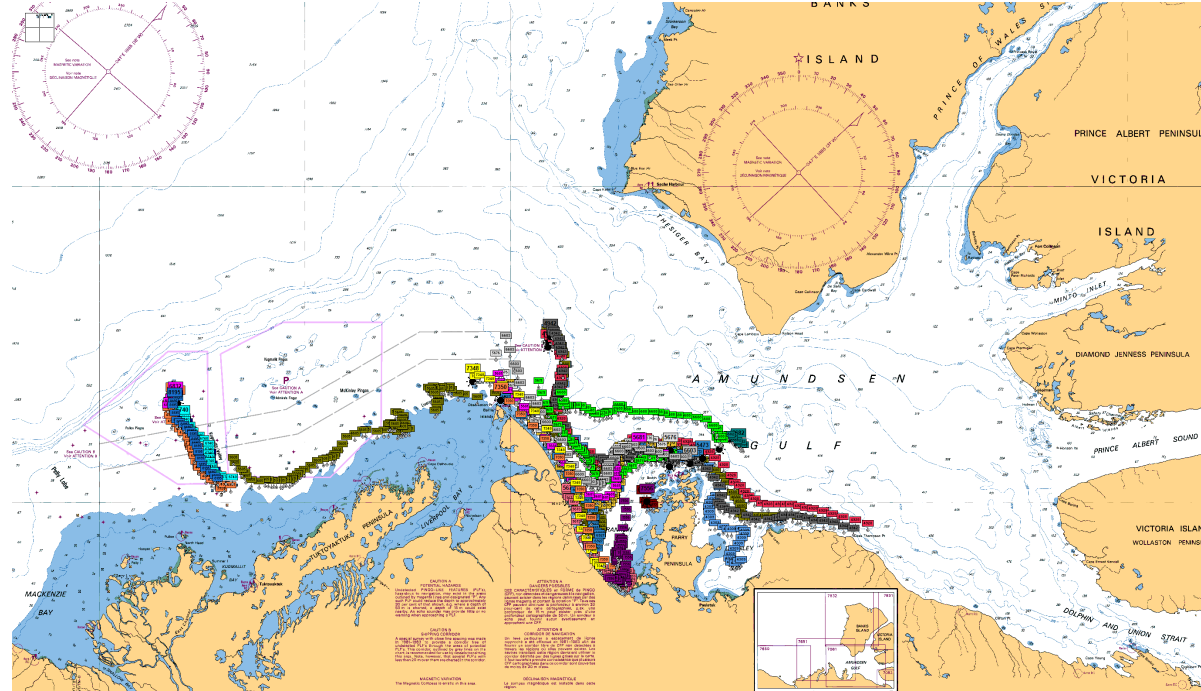


# 2017 deployments





# 2019 deployments







**Thank-you!**