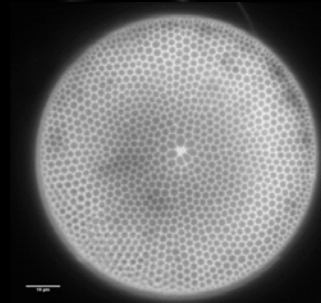
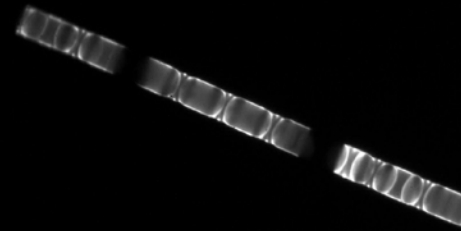
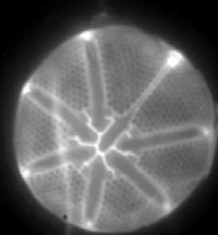
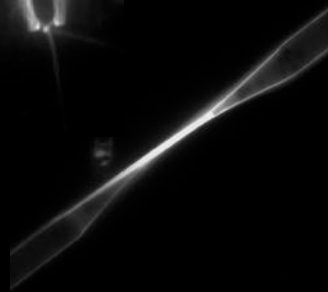
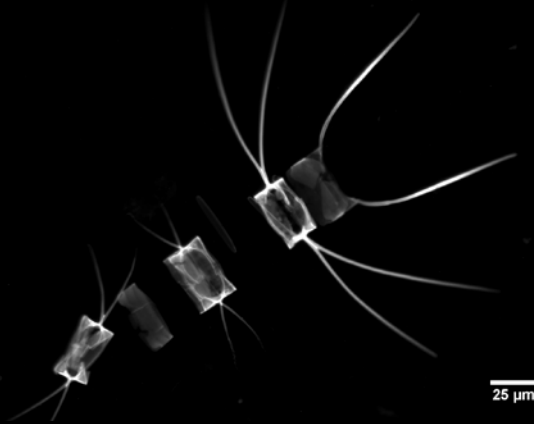
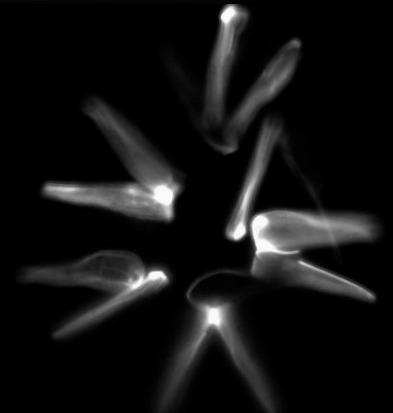
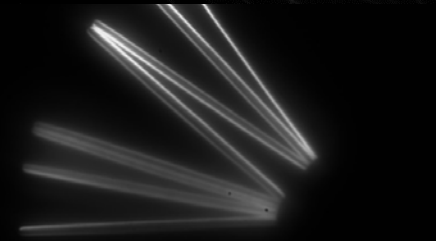
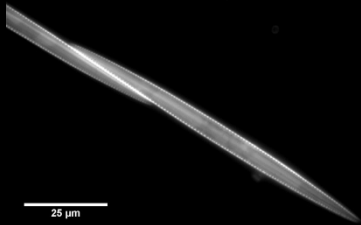
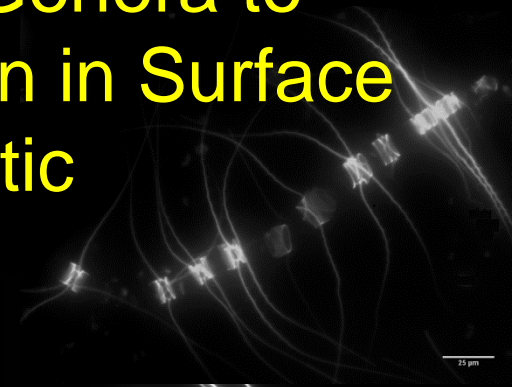
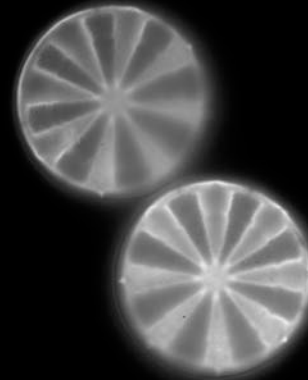
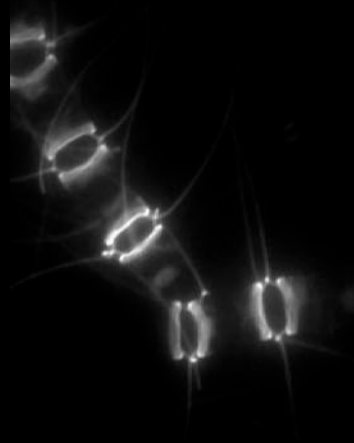
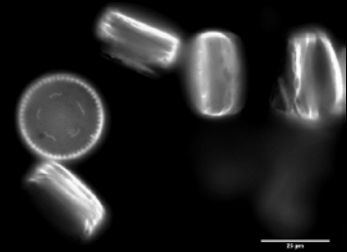


Contribution of Different Diatom Genera to Whole-Assemblage Silica Production in Surface Waters of the Western Arctic

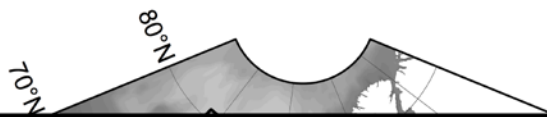


2-(4-pyridyl)-5-((4-(2-dimethylaminoethylaminocarbonyl)methoxy)-phenyl)oxazole
Also known as Lysosensor DND-160, a fluorescent dye manufactured by Life Technologies

Western Arctic Hotspot

Distributed Biological
Observatory (DBO)
July 2015

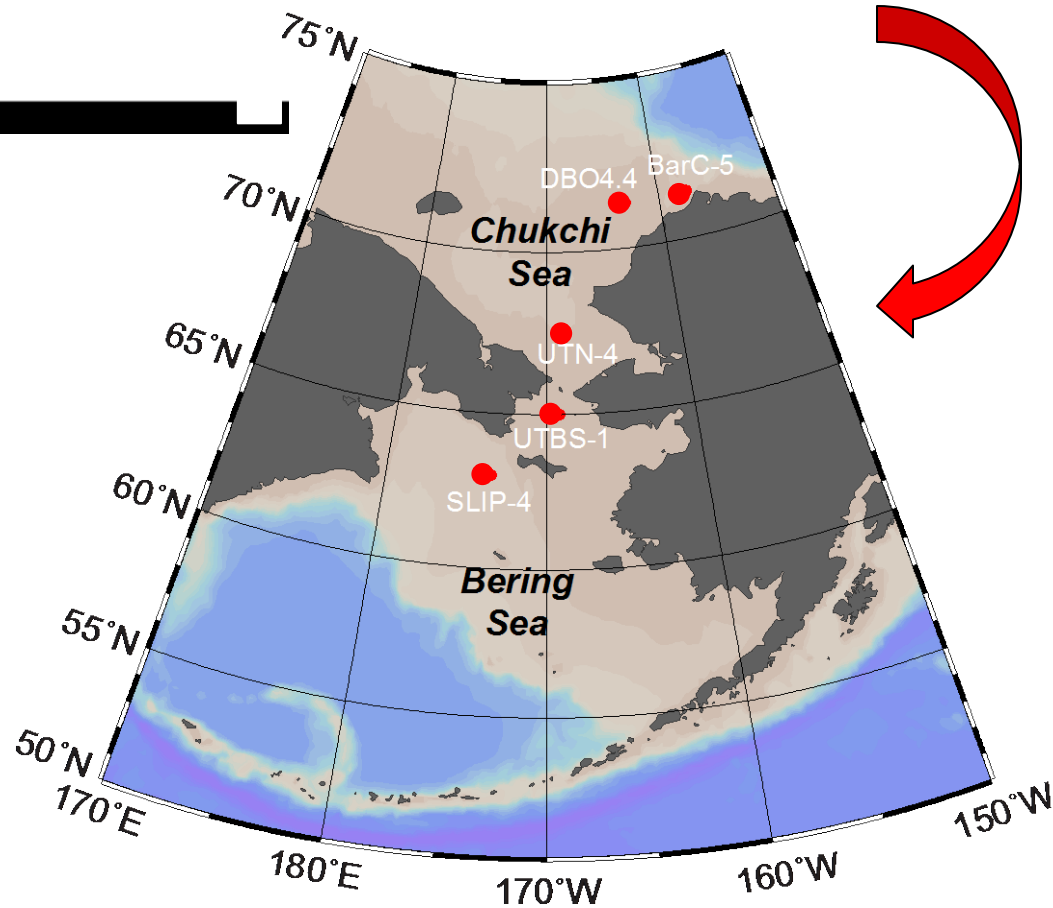
b



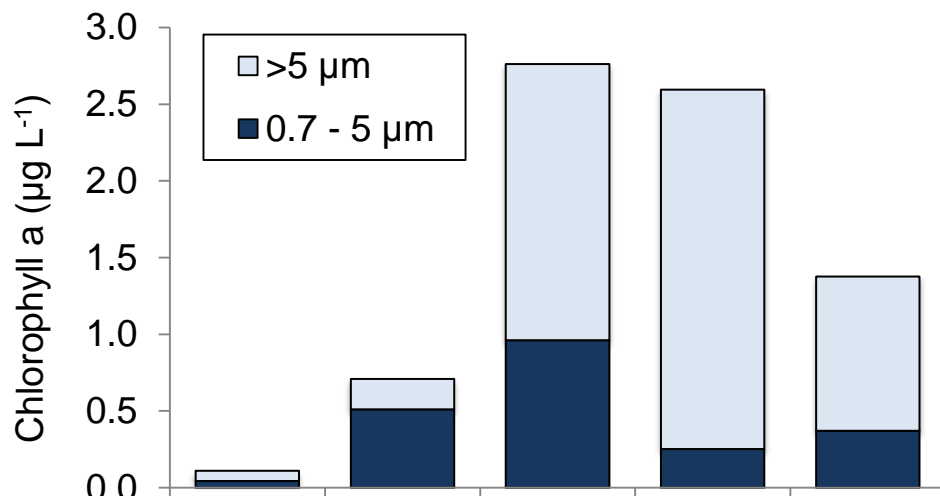
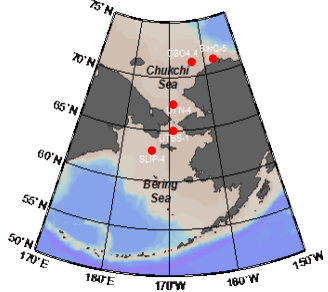
Karina Giesbrecht



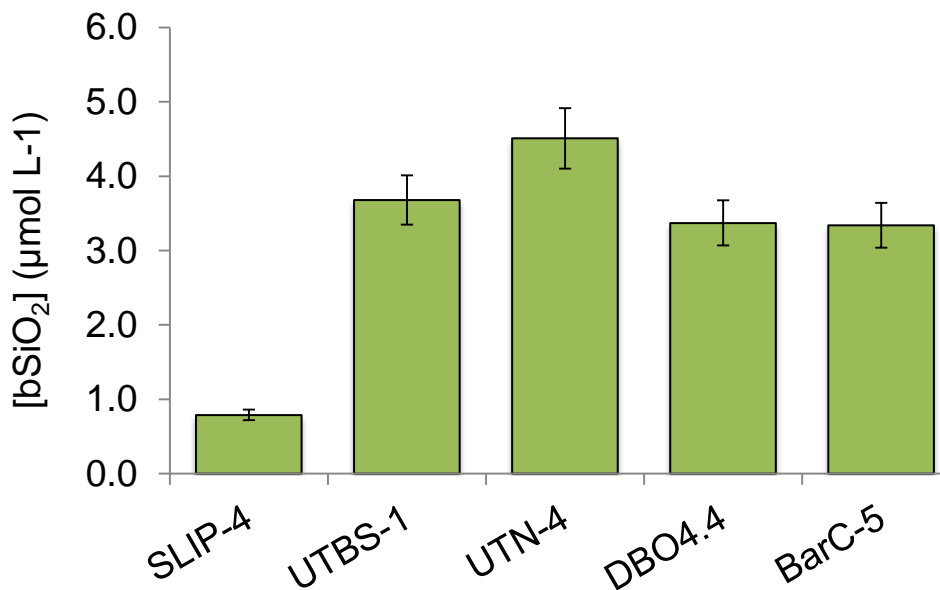
Jennifer Long



Euphotic-zone Chl *a* and biogenic SiO₂

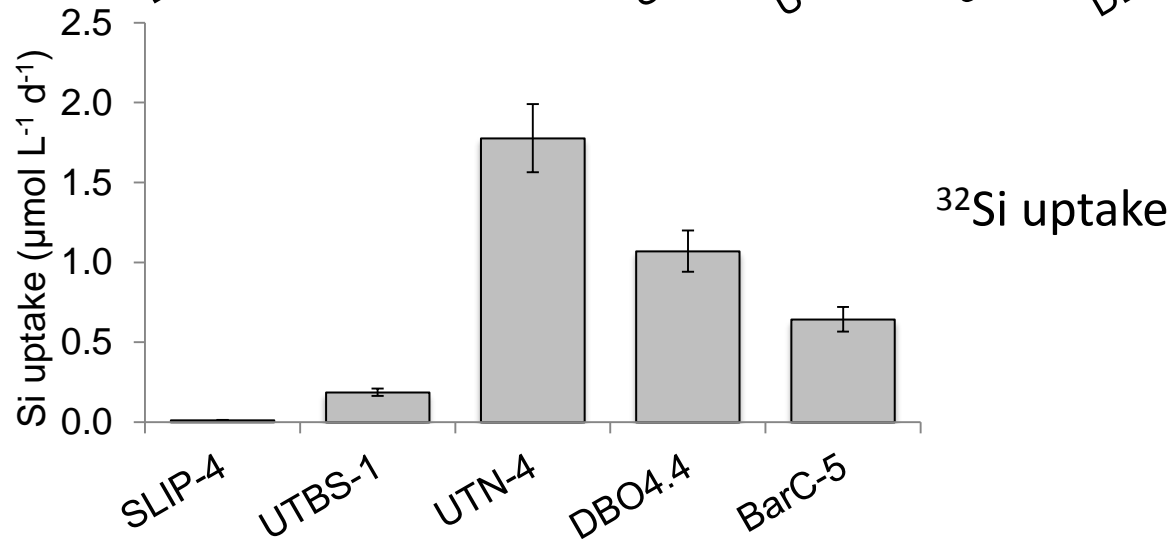
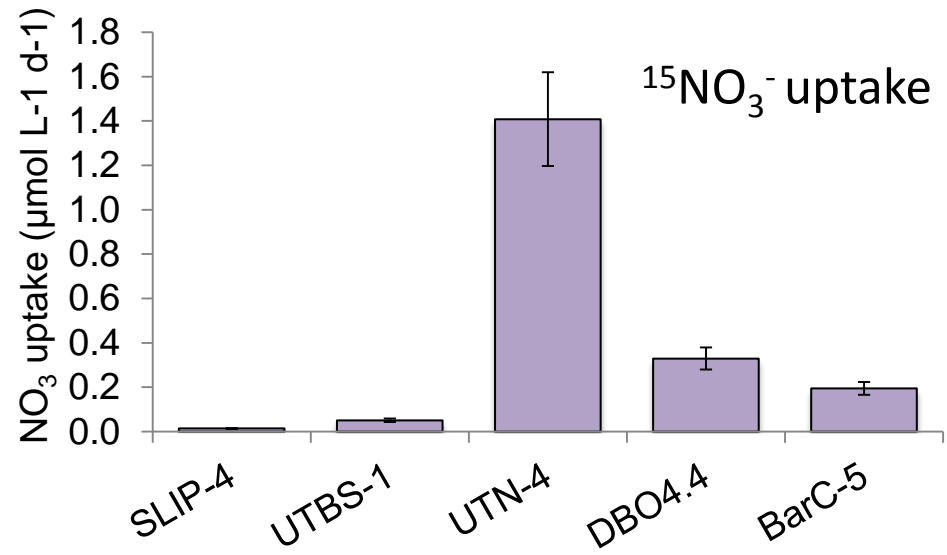
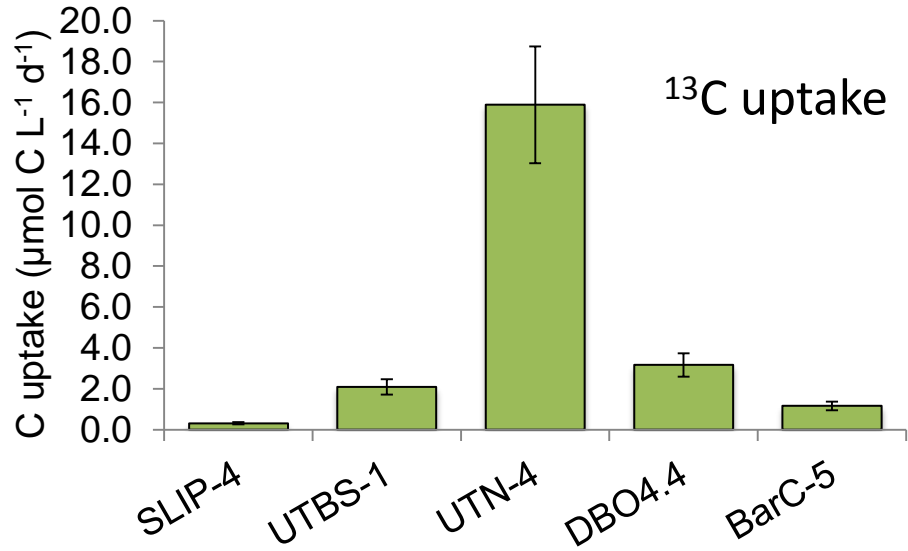
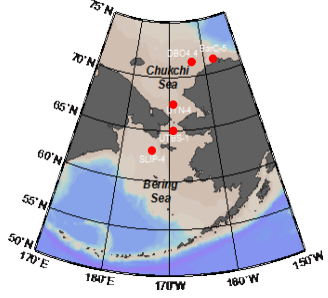


[Chl *a*]

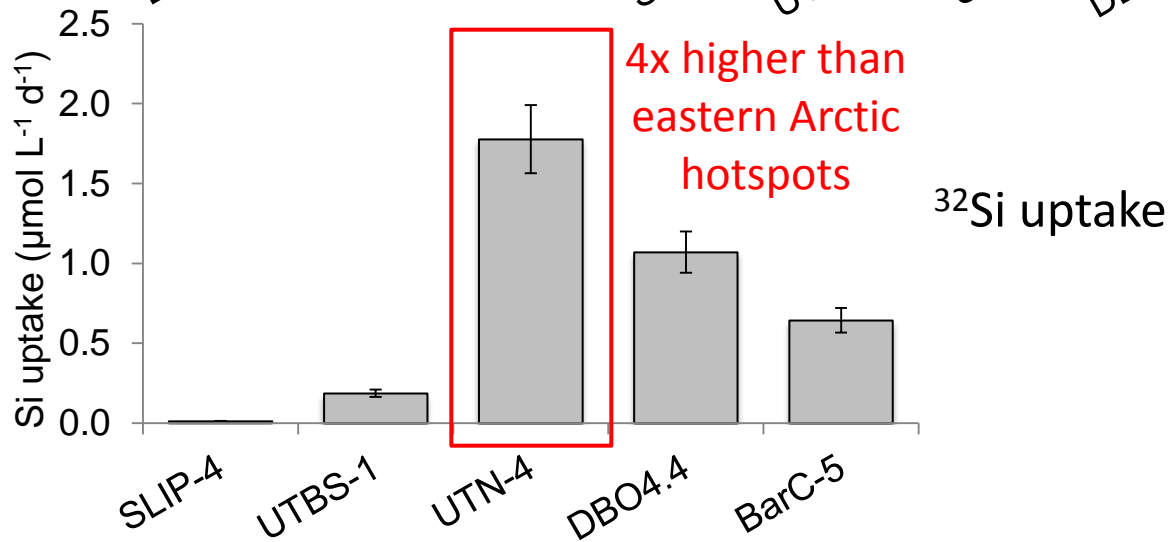
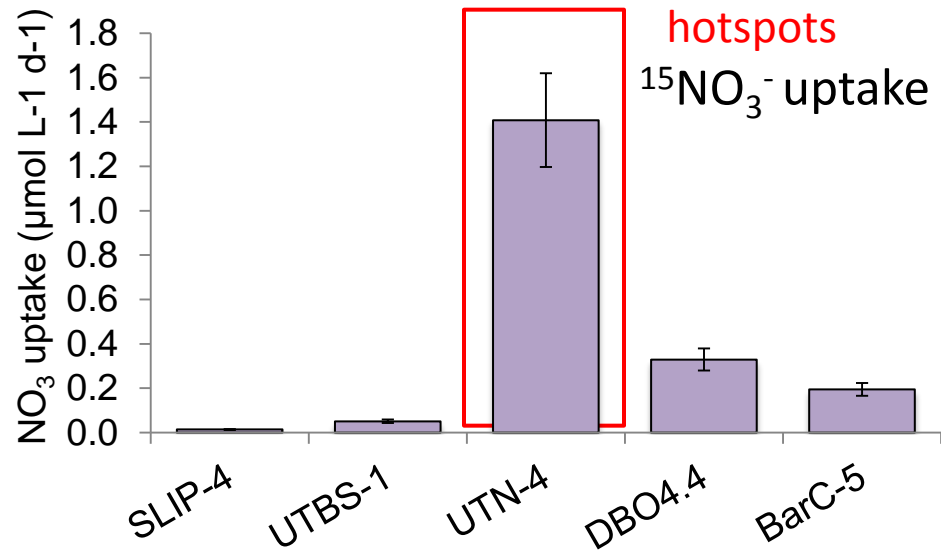
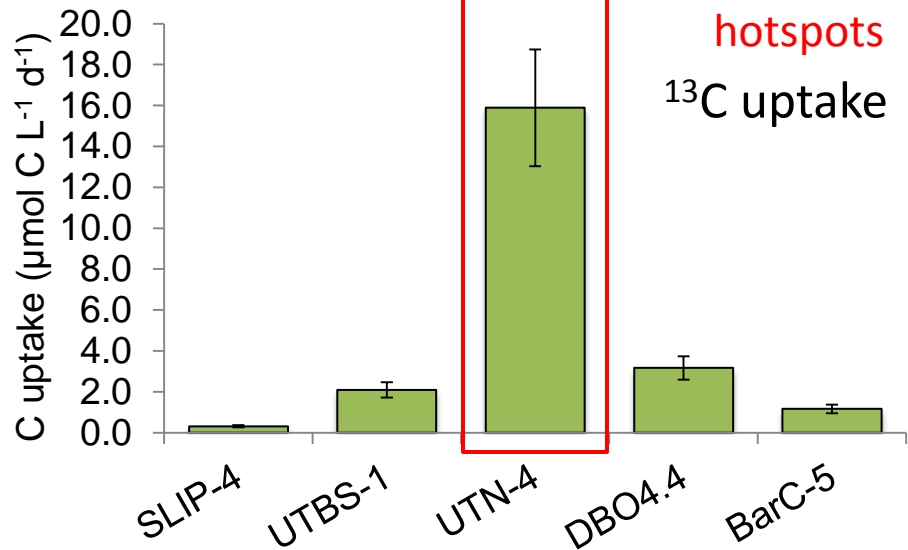
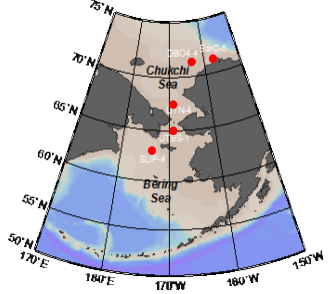


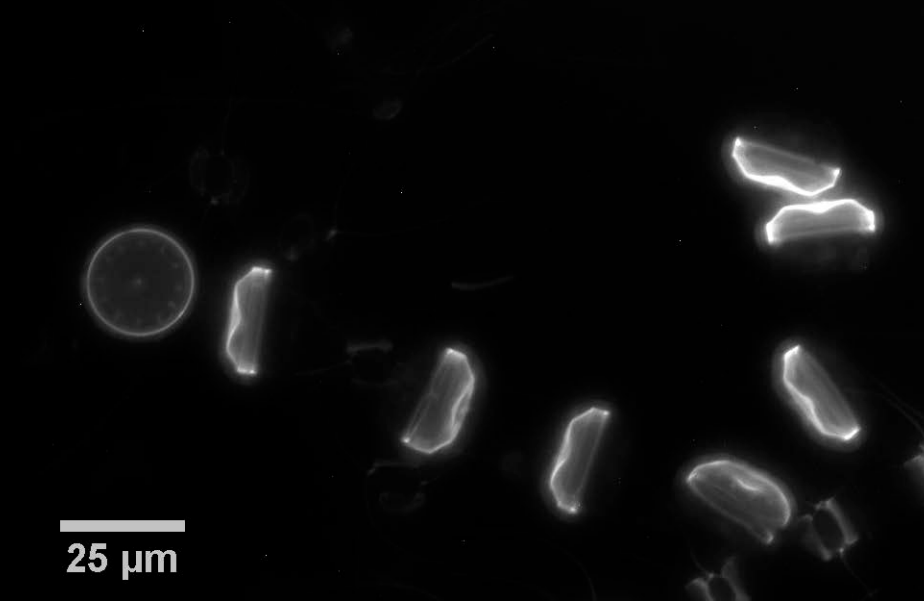
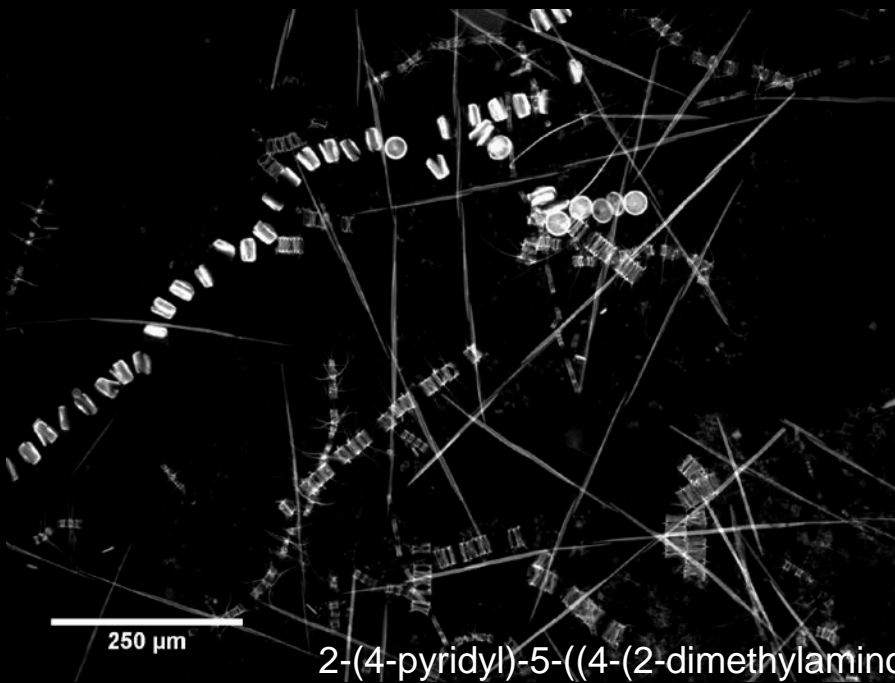
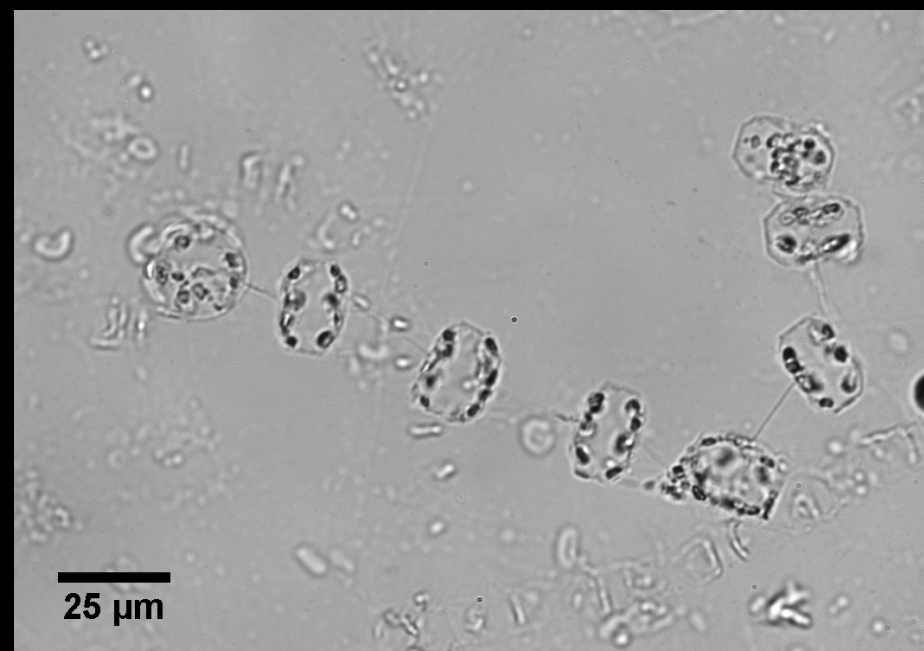
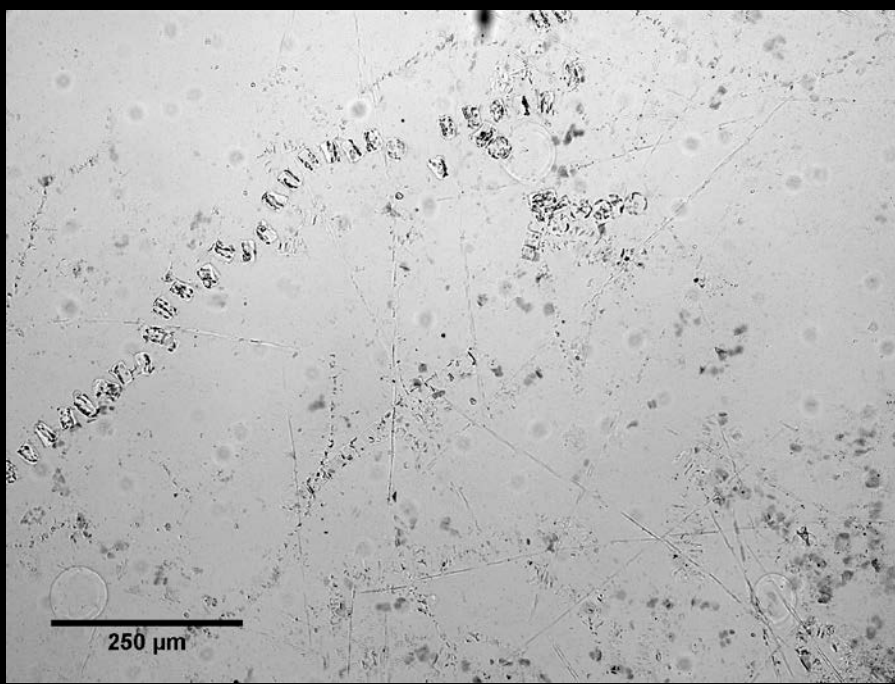
[bSiO₂]

Euphotic-zone Production Rates



Euphotic-zone Production Rates

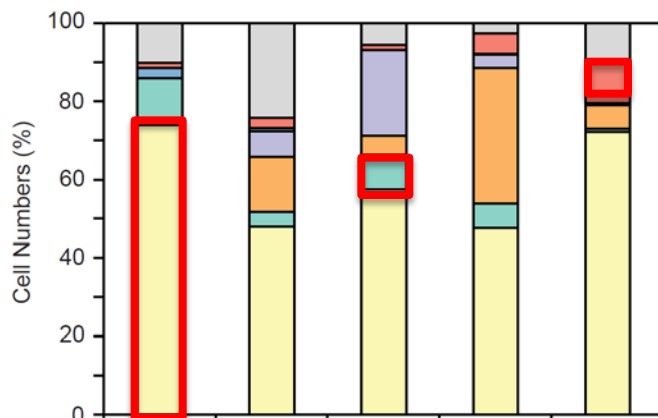




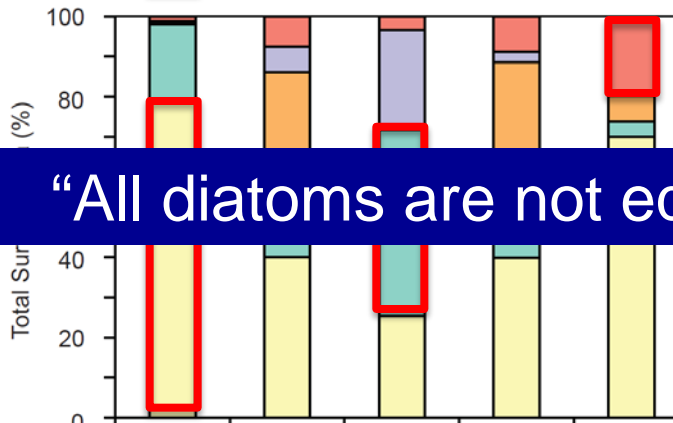
CN(C)CCOC1=CC=CC=C1O2=CC=CC=C2N1
Also known as LysoSensor DND-160, a fluorescent dye manufactured by Life Technologies

Euphotic-zone % PDMPO, cell numbers and surface area by taxa

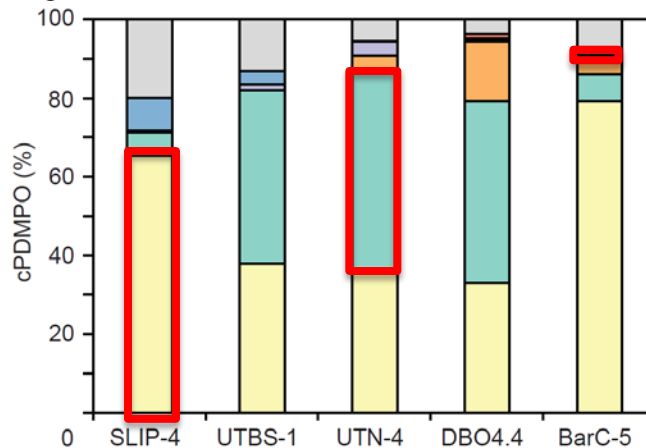
- Chaetoceros* spp.
- Thalassiosira* spp.
- Pauliella* spp.
- Cylindrotheca* spp.
- Meringosphaera* spp.
- Pseudo-nitzschia* spp.
- Other Diatoms



Cell number (%)



Total surface area (%)



cPDMPO (%)

“All diatoms are not equal”